

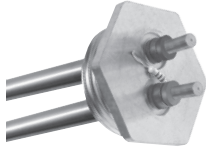


The new degree of comfort.™

## Professional™ electric water heater line is engineered for longer life – resistored heating elements and anode rod up to a 10-year warranty

### Efficiency

- Stand by watts loss 56 - 97
- Isolated tank design reduces conductive heat loss
- High efficiency resistored heating element for added protection to prolong anode rod and tank life

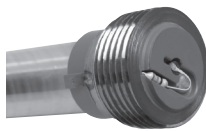


### Performance

- FHR: 42 - 88 gallons based on gallon capacity
- Recovery rate is 21 gallons at a 90 degree Fahrenheit rise\*\*

### Features

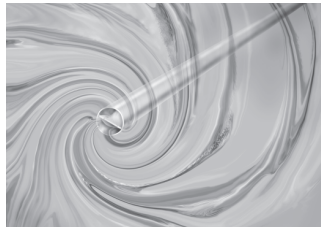
- High performance and lower operating cost
- Compliant with many electric utility incentive programs
- Resistored anode rod equalizes aggressive water action and prolongs the life of the water heater



- Electric junction box located above heating elements for easy installation
- Over-temperature protector cuts off power in excess temperature situations
- Automatic thermostat keeps water at desired temperature

### Plus...

- EverKleen™ self cleaning device fights harmful sediment build-up with a high-velocity spiraling water stream – helps operating efficiency by saving energy, money and improving tank life

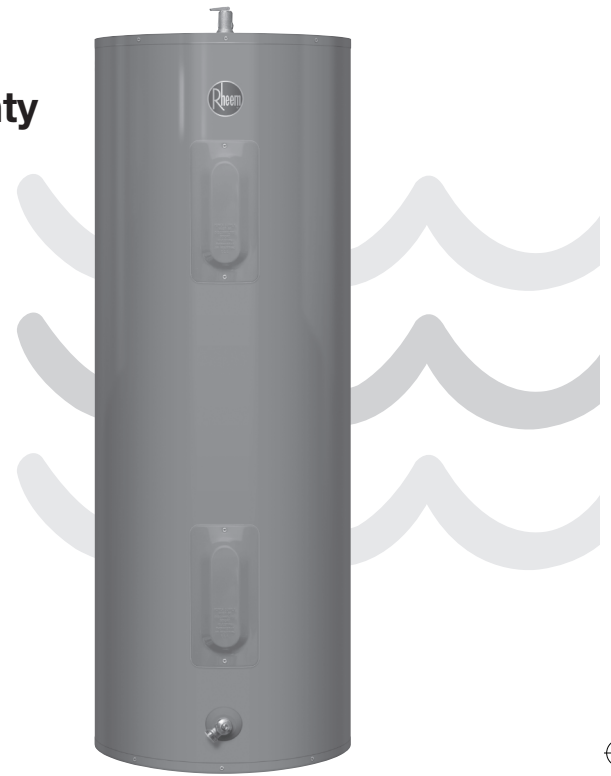


- Brass drain valve
- Temperature and pressure relief valve included

### Warranty

- 8-Year limited tank and 6-year parts warranty with a professional installation\*
- With ProtectionPlus™ the 8-year limited tank warranty becomes 10-year

\*See Residential Warranty Certificate for complete information



**Professional™**  
39 and 63 Imperial Gallon  
Capacities  
240 Volt AC/Single Phase  
Electric



†LEED Point = 1

See dimensions chart on back.



INTEGRATED HOME COMFORT



The new degree of comfort.™



Residential Electric  
Professional Water Heaters

DESCRIPTION				FEATURES					ROUGHING IN DIMENSIONS									STANDBY WATTS LOSS
MODEL NUMBER	STORAGE CAPACITY			ELEMENTS QTY.	STANDARD ELEMENTS				OVERALL HEIGHT A		DIAMETER B		HEIGHT TO DRAIN VALVE C		ESTIMATED SHIPPING WEIGHT			
	U.S. GALS.	IMP. GALS.	LITRES		208 VOLT WATT.	AMP.	240 VOLT WATT.	AMP.	IN.	MM	IN.	MM	IN.	MM	LBS.	KG		
<b>TOP INLET</b>																		
PRO415TM**	45	39	178	2	2250	10.8	3000	12.5	46	1168	21-3/4	552	3-1/2	89	117	53	66	
PRO415BC-3	45	39	178	2	2250	10.8	3000	12.5	49	1245	22.25	565.15	3.5	89	130	59	61	
PRO415BC-3	45	39	178	2	2850	10.8	3800	12.5	49	1245	22.25	565.15	3.5	89	130	59	61	
PRO425TM	45	39	178	2	2250	10.8	3000	12.5	46	1168	24-1/4	616	3-1/2	89	134	61	56	
PRO615TM**	72	63	285	2	3380	16.3	4500	18.8	59	1499	23	584	3-1/2	89	177	80	87	
PRO620TM	72	63	285	2	3380	16.3	4500	18.8	59	1499	24-1/2	622	3-1/2	89	188	85	72	
<b>BOTTOM INLET</b>																		
PRO415BC-2	45	39	178	2	2250	10.8	3000	12.5	46	1168	21-3/4	552	3-1/2	89	117	53	70	
PRO615BC-2	72	63	285	2	3380	16.3	4500	18.8	59	1499	23	584	3-1/2	89	177	80	97	

\*\*Not available for purchase in British Columbia

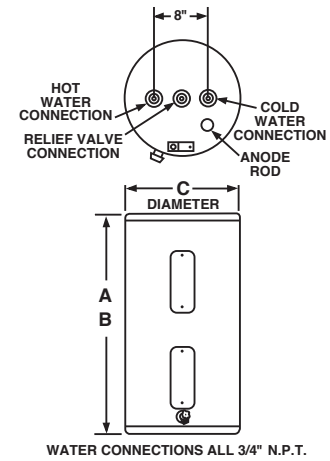
Notes: 3/4" N.P.T. Outlet, Inlet, Anode Rod, T&P Valve Connections. • 60°C (140°F) Thermostat Setting. • Not available in 3 phase wiring.  
• Heaters furnished with standard 240 volt AC, single phase non-simultaneous wiring, and 4500 watt upper and lower heating elements.

\*\*Recovery = wattage/2.42 x temp. rise °F.  
Example:  $\frac{4500W}{2.42 \times 90^\circ} = 21 \text{ GPH}$

\*\*Recovery calculations used are based on 4500 watt elements used in non-simultaneous operation.



LEED Point = 1



**NOTE: On bottom entry models, cold input is tied into the drain valve.**

*In keeping with its policy of continuous progress and product improvement, Rheem reserves the right to make changes without notice.*

Rheem Water Heating • 101 Bell Road  
Montgomery, Alabama 36117-4305 • www.rheem.com

Rheem Canada Ltd./Ltée • 125 Edgeware Road, Unit 1  
Brampton, Ontario L6Y 0P5 • www.rheem.com



INTEGRATED HOME COMFORT

01/13 WP FORM NO. 101-45CAN Rev. 19